

## Mission

Eastman Foundation contributions are aimed at serving and strengthening the greater community by building strong partnerships and helping improve quality of life. The company focuses its resources on organizations and projects in the areas of education, environment, empowerment and economic development.



## How to Apply

The Foundation only accepts contribution requests through our online application process. Go to [www.eastman.com/giving](http://www.eastman.com/giving) to apply. A prescreening assessment is available to determine organization or program eligibility. After an application has been submitted and reviewed, a decision will be communicated by the end of the current year to each organization that has submitted a qualified application.



[www.eastman.com/giving](http://www.eastman.com/giving)

As a general rule, Eastman will not consider contributions to the following:

- Organizations that discriminate on the basis of race, ethnicity, religion, gender or gender identity, sexual orientation, national origin, age, disability, or any status protected by applicable law
- Places of worship and institutions devoted solely to religious instruction\*
- Individual agencies supported by the area United Way organization, except capital fund drives which are normally supported by the community, rather than directly by the United Way
- Individuals, athletic teams or sports-related events, choirs, drill teams, fraternal, social or political organizations and travel-related expenses, including student trips or tours

\*Programs operating under the tax exemption of a religious organization are eligible for consideration if they are open to the public and the program's purpose is unrelated to furthering a religious faith.

Visit our corporate responsibility website:

<http://responsibility.eastman.com/>

## Global Contributions policy and guidelines



**EASTMAN**  
FOUNDATION

*Good for Good*



# Global Contributions

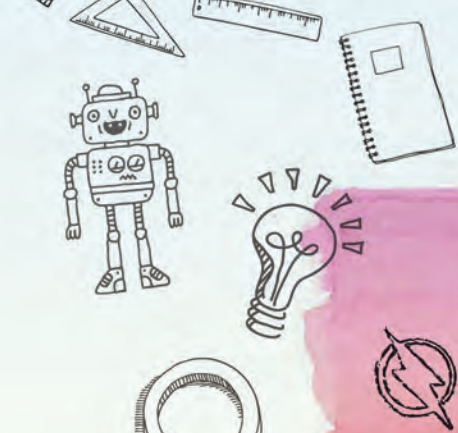
## Scope of Influence

4  
x 5  
= ?



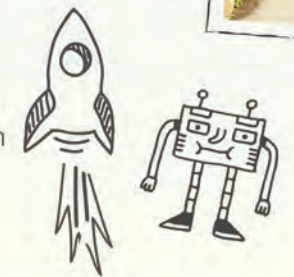
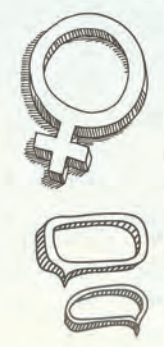
### Education

Using partnerships to help prepare and inspire students to excel, especially in science, technology, engineering, arts and math (STEAM)



### Empowerment

Unleashing talent through the cultivation of a diverse and inclusive workforce, which fosters creativity, innovation and camaraderie throughout our global company and community



### Economic Development

Supporting innovative and impactful economic development initiatives that improve the quality of life and directly benefit the residents, businesses and infrastructure in our home communities



### Environment

Promoting environmental awareness and stewardship, and driving energy conservation



## Giving Guidelines

Through the Eastman Foundation, qualified non-profit charitable organizations can receive financial support for projects that promote sustainable community improvement among Eastman's four priority focus areas: education, environment, empowerment and economic development.

Please keep in mind that any organization receiving funds must adhere to essential elements of Eastman's Code of Business Conduct:

- Contributions are generally restricted to organizations holding 501 (c)(3) tax-exempt status.
- Contributions are usually directed toward the communities in which the company has operating units.
- Contributions should benefit substantial numbers of citizens.
- Contributions will target public/private partnerships designed to have lasting and positive impact, shared financial backing, and active volunteer support.
- Contributions are for one year unless otherwise specified, and recipients are responsible for requesting renewed support. Each request will be considered anew and compared against other requests received for that year.
- In select cases, Eastman will grant multi-year contributions for programs that address emerging community needs. Generally, these multi-year commitments are capital fund drives, which usually take place over three years. Support for such new organizations or initiatives will not extend beyond a five-year time period.